

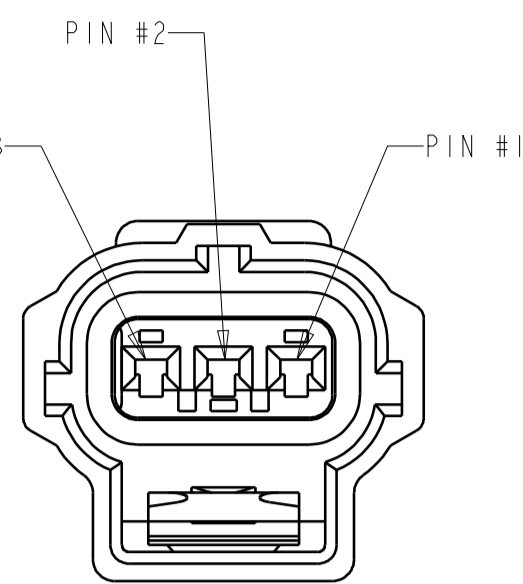
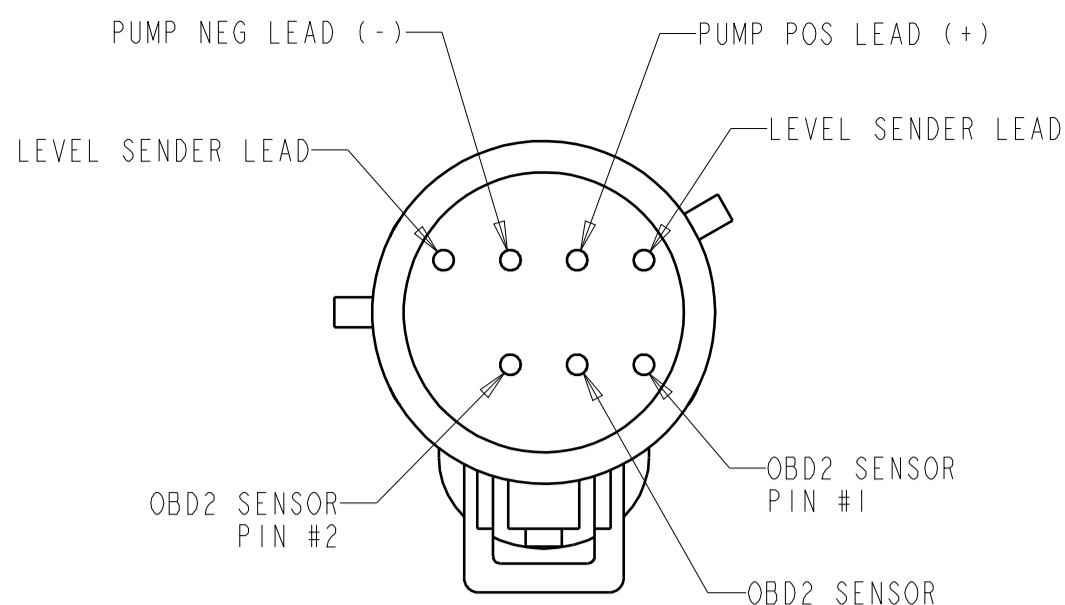
REVISIONS						
ZONE	LTR.	DESCRIPTION	ECN NO.	DATE	BY	APPR'D
	A	RELEASED FOR PRODUCTION	72122	26MAY09	RMB	BLM
4A	B	B1 REPLACED "HOT STAMP INFO" WITH "MARKING INFO"	73288	4FEB11	SNB	BLM

D

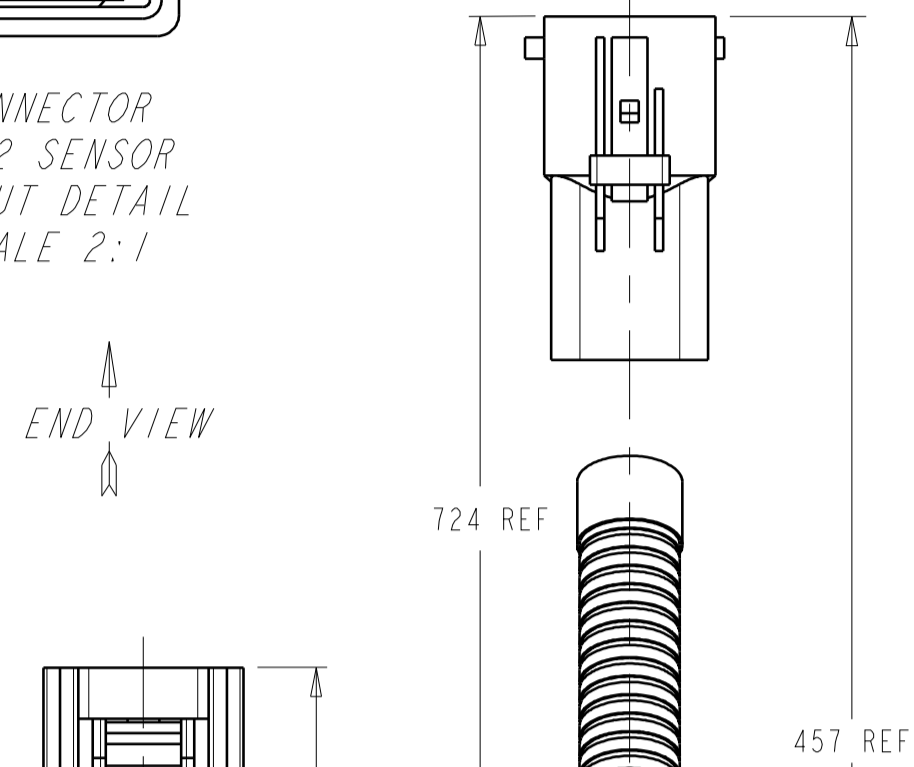
C

B

A

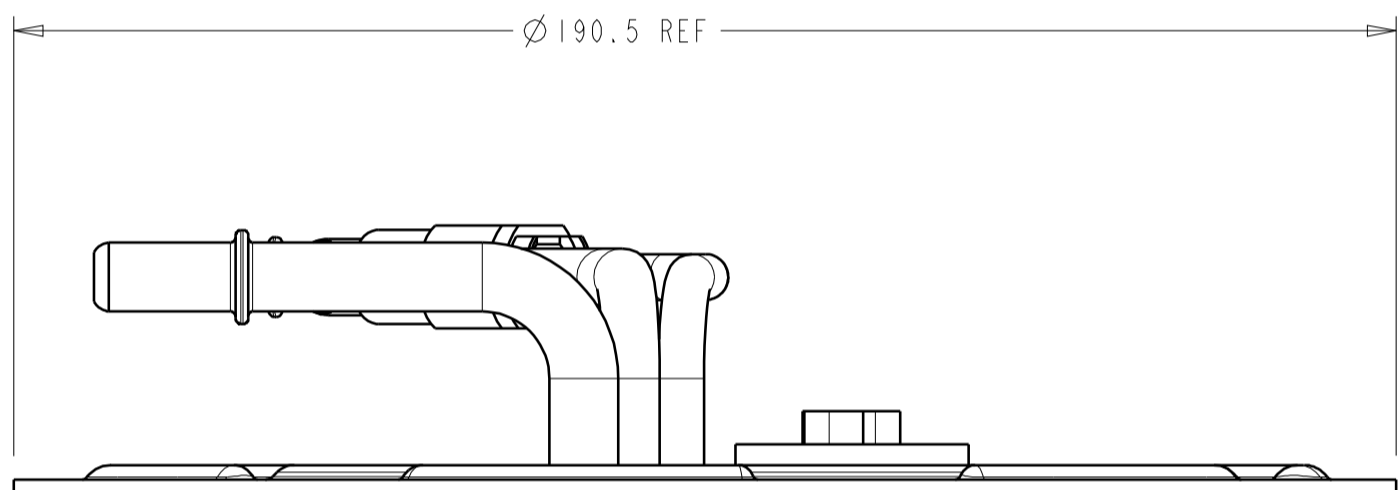
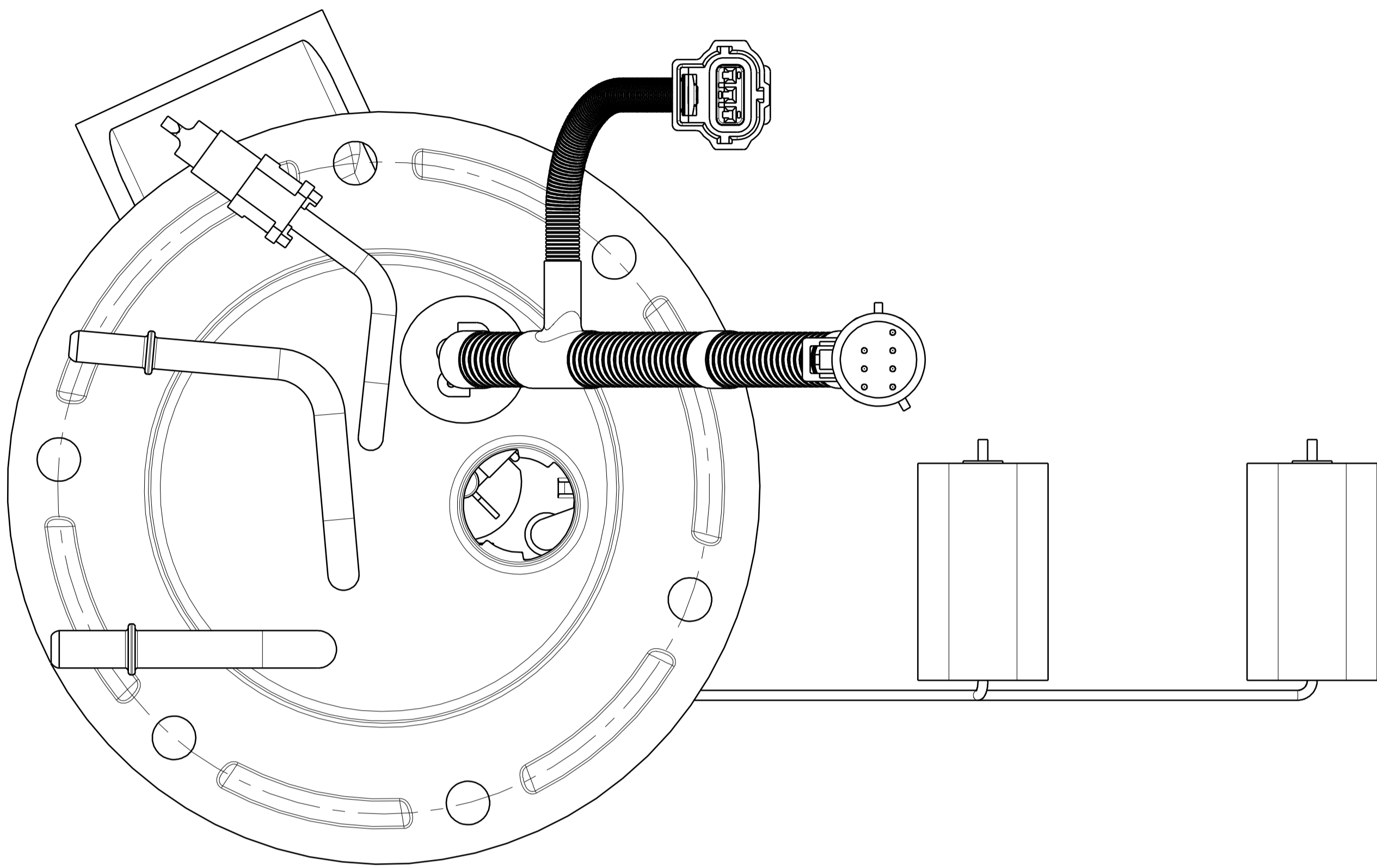


END VIEW



AUXILIARY TUBE CAPPED WITH QUICK CONNECTOR

MARKING INFO  
REFERENCE BILL OF MATERIAL



480 REF

FULL STOP REFERENCE  
(SEE CHART)

EMPTY STOP REFERENCE  
(SEE CHART)

- NOTE:
- SPECIAL CUSTOMER PACKAGING REQUIREMENTS MAY CALL FOR THE ADDITION OF SPECIFIC LABELS NOT SHOWN ON THIS DRAWING
  - SHOWN WIRE ROUTING MAY DIFFER FROM FINISHED PRODUCT.

FLOAT POSITION	RESISTANCE (OHMS)
FULL STOP (280.01)	160.5±3.0
EMPTY STOP (15.51)	15±1

INTERNAL USE ONLY DISTRIBUTION CODE		TOLERANCE UNLESS OTHERWISE SPECIFIED		MATERIAL		SCALE: 1:1 DATE: 26MAY09	
REF: FM0002219		DO NOT SCALE PRINT		FINISH		DRN: BY: R. BRUBAKER	
DIMENSIONS AND TOLERANCES PER ANSI/ASME Y14.5M - 1994		E SIZE		PRODUCTION		CHK'D BY: B. MIDDLETON	
PRO-E		PRODUCTION		TITLE		DRAWING NO. REV.	
FUEL MODULE OUTLINE		TU252		B		REV. B	

NOTES: ASSEMBLY/TEST/PROCESS  
S SAFETY CHARACTERISTIC  
X SIGNIFICANT CHARACTERISTIC

AFTERMARKET DIVISION  
630 COLUMBIA STREET  
CARO, MICHIGAN 48723